

2800 ACOUSTIC SERIES BLUETOOTH BOOKSHELF SPEAKER SYSTEM USER MANUAL

MODEL 150194




MANHATTAN

MAN-150194-UM-0711-02

Thank you for purchasing the MANHATTAN® 2800 Acoustic Series Bluetooth Bookshelf Speaker System, Model 150194.

The easy-to-follow installation instructions in this manual will soon have you enjoying the benefits of these popular features:

- Two-way speakers deliver rich, powerful sound
- Exceptional audio performance with most Bluetooth-enabled devices
- Separate volume and bass controls
- Shielded to prevent distortion and maintain clear, crisp sound
- Lifetime Warranty

Package Contents

- 2800 Acoustic Series Bluetooth Bookshelf Speaker System
- Cables and quick install guide

SAFETY PRECAUTIONS

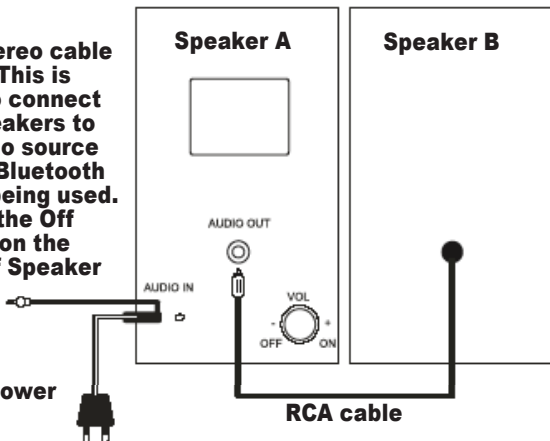
Prior to installing your speakers, read the following safety guidelines to help prevent damage to any electrical components or harm to users.

- Do not place this product or any of its parts near heat or potential heat sources, nor in any moist or damp environment.
- Do not hit, drop or mishandle electrical components in such a way as to loosen, break or otherwise render inoperative any interior or exterior parts. Place only on a stable, well-ventilated platform.
- Do not remove the back panel except as directed by a qualified technician in order to minimize the possibility of electrical shock. If in need of repair or inspection, bring the speaker(s) to a professional repair person.
- Should liquids or other materials (including fragments of broken parts) get inside the speaker cabinet, immediately shut power off to the speaker and have it professionally inspected and/or repaired before further operation.
- Turn off the power and unplug from power source when the system is not in use and during electrical storms.
- Clean with a soft, damp cloth only. Avoid abrasives or chemicals.

SETUP/CONNECTIONS

3.5" stereo cable
NOTE: This is used to connect the speakers to an audio source only if Bluetooth is not being used. (Press the Off button on the front of Speaker A.)

AC power cord



1. Carefully unpack the speakers. Do not lift or remove the speakers from the box by the function knobs or attached cords and cables, as this may damage the speaker unit. Place the speakers in a location where cord and cable connections can be made easily and properly.
2. Connect the speakers to each other by inserting the RCA cable from Speaker B into the Audio Out jack of Speaker A (as shown above).
3. Plug the AC power cord on Speaker A into a convenient outlet.

Rotating the knob on the rear panel of Speaker A clockwise will turn the speakers on and control the volume. First, however, refer to Bluetooth Setup below to initialize the speaker system.

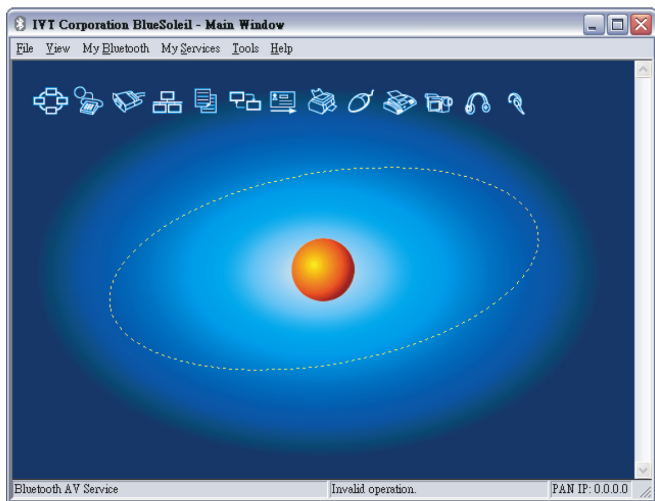
NOTE: After the Bluetooth Setup procedure is completed, if either speaker doesn't provide sound once power is on, check all the connections and controls. If only one speaker emits CD audio when the system is plugged into a headphone jack, it's because WAV files and games normally transmit only one track of audio.

BLUETOOTH PAIRING/SETUP FOR IVT SOFTWARE

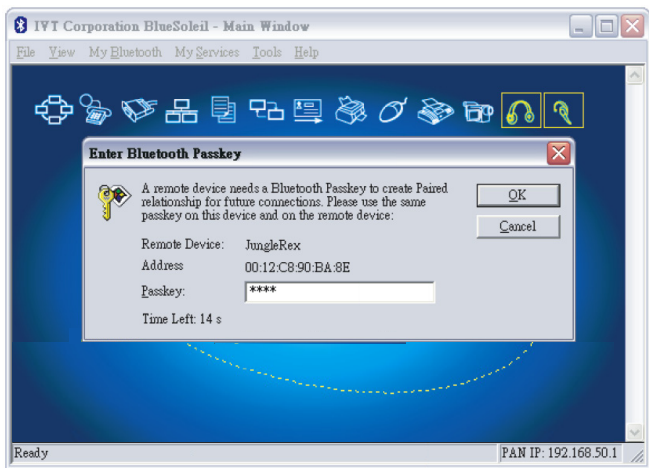
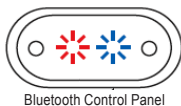
The following “pairing” procedure — making these speakers compatible with whatever Bluetooth-enabled audio source is to be used in conjunction with it — is only required the first time you set up your speaker system. Subsequent use only requires that you rotate the knob on the rear panel of Speaker A clockwise to turn the speakers on.

NOTE: The procedure and screen images presented here are for IVT’s BlueSoleil software. If your operating system features its own built-in Bluetooth management software, refer to it for instructions.

1. Turn your computer on and open your Bluetooth program. (Refer to your Bluetooth user manual if you don’t know how to install and operate this software.)



2. On the front of Speaker A (within the Bluetooth “control panel” at the bottom), press and hold in the left button until the red and blue LEDs begin to flash (3 to 5 seconds). The blue LED represents the status of the Bluetooth system; the red LED represents the status of the Bluetooth pairing function.
3. Have Bluetooth search for available devices. When the BT Speakers icon or listing appears on screen (perhaps among several other found devices), click on it to begin the pairing process.
4. If an Enter Bluetooth Passkey screen displays, enter “0000” in the “Passkey” field. Click “OK.” Remember, this only needs to be done the first time you set up your speaker system.



5. Click “Connect” on the final prompt and you’re ready to enjoy your Bluetooth Bookshelf Speaker System.
6. Adjust the volume by rotating the knob on the back of Speaker A.

SPECIFICATIONS

Standards and Certifications

- BQB
- CE
- FCC
- R&TTE
- RoHS
- WEEE
- Bluetooth V1.2

General

- Frequency response:
150 Hz – 20 kHz
- Signal-to-noise ratio (S/N):
<75 dB
- RMS power 5 W x 2
- Diameter, driver(s):
 - Woofer, 7.6 cm (3 in.)
 - Tweeter, 2.54 cm (1 in.)

Bluetooth

- Bluetooth V 1.2
- Class 2
- A2DP protocol support
- Effective range: up to 20 m
(65.6 ft.)
- 748 kbps data rate

Connections

- RCA (speaker out); 3.5" stereo
(audio in)

Power

- Power supply: internal
- Controls: volume/power with LED
indicator, rear-mount

Physical

- Dimensions: 9.5 x 12 x 18 cm
(3.7 x 4.72 x 7 in.)
- Cable lengths:
 - Power: 1.2 m (4 ft.)
 - RCA: 1.2 m (4 ft.)
 - Stereo: 1.15m (3.75 ft.).

Package Contents

- 2800 Acoustic Series Bluetooth
Bookshelf Speaker System
- Cables, quick install guide



MANHATTAN[™]

BRINGING COMPUTERS TO LIFE

MANHATTAN[®] offers a complete line
of PC Components, Peripherals, Cables and Accessories.

Ask your local computer dealer for more information
or visit us online at

www.manhattan-products.com

Copyright © MANHATTAN

All products mentioned are trademarks or registered trademarks of their respective owners.