



# LCD Monitor Pole

**LCD monitor arms help utilize work space, improve ergonomics and share views.**

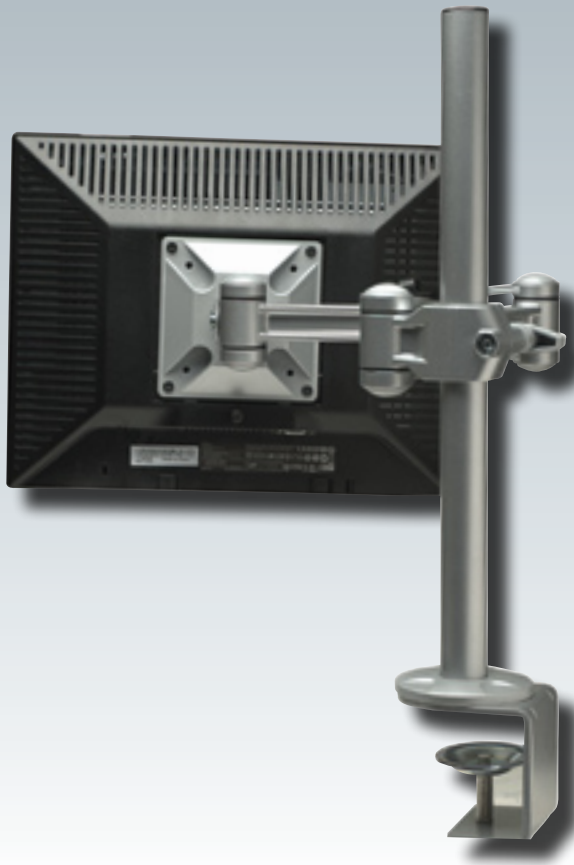
The MANHATTAN® LCD Monitor Pole with Double-Link Swing Arm provides a secure and elevated position for a single flat-panel display to help keep valuable desk and work space free and uncluttered. Its fully adjustable tilt, rotate, side-to-side, height and tension settings enable a comfortable and productive viewing position that helps decrease eye fatigue and reduce neck and back strain for improved productivity. The LCD display can be easily rotated around the pole to allow others to view it from almost any direction. Durable die-cast aluminum construction and a sturdy clamp provide a quick, easy and secure mount to a desktop or other horizontal surface. VESA compliant and ready to install with included hardware, there's no need to drill holes into desks or countertops.

## Lifetime Warranty

Strict manufacturing standards ensure the highest quality in all MANHATTAN products. All items carry a full Lifetime Warranty — the strongest quality commitment anyone can make.

**Model**  
420693





**Model**  
420693

## Features

- Securely holds one LCD monitor above the desktop to increase work space and minimize clutter
- Double-link swing arm extends reach and range of motion
- Optimizes ergonomics and monitor views with tilt, rotate, side-to-side, height and tension adjustments
- Die-cast aluminum construction with heavy-duty clamp mounts to desktop or other horizontal surface
- Easy installation ideal for home, office and retail applications — no drilling required
- Meets VESA standards — fits monitors up to 22" and up to 22 pounds
- Lifetime Warranty

## Specifications

### GENERAL

- Fits 75 x 75 mm / 100 x 100 mm VESA-compliant monitors up to 22"
- Monitor weight capacity: up to 10 kg (22 lbs.)
- Installs on horizontal surfaces up to 7 cm (2.75 in.) thick

### DIMENSIONS

- Height: 47.7 cm (18.75 in.)
- Diameter: 2.85 cm (1.12 in.)
- Arm length: 51 cm (20 in.), overall
- Weight: 2 kg (4.4 lbs.)

### PACKAGE CONTENTS

- LCD Monitor Pole with Double-Link Swing Arm
- Installation hardware with instructions and installation tool

For more information on MANHATTAN products, consult your local dealer or visit [www.manhattan-products.com](http://www.manhattan-products.com).



Copyright © MANHATTAN

All names of products or services mentioned herein are trademarks or registered trademarks of their respective owners. Distribution and reproduction of this document, and use and disclosure of the contents herein, are prohibited unless specifically authorized.

MH-420693-DS-1006-02