

WIRELESS 802.11n BROADBAND ROUTER QUICK INSTALL GUIDE

MODEL 523967




INTELLINET
NETWORK SOLUTIONS

INT-523967-QIG-0208-01

Thank you for purchasing the INTELLINET NETWORK SOLUTIONS™ Wireless 802.11n Broadband Router, Model 523967.

This Quick Install Guide presents the rudimentary steps required to set up and operate this device. For specifications and more detailed instructions, refer to the user manual 1) on the CD enclosed with this product; 2) on the Web site listed below; or 3) in some cases, printed and enclosed with this product. Contact your INTELLINET NETWORK SOLUTIONS dealer with comments or questions, or visit www.intellinet-network.com for information on the latest software and firmware updates, related products and additional contact information.

Safety Information

For the safety of users and their equipment, follow these safety guidelines:

- This device is for indoor use only; DO NOT place this router outdoors.
- DO NOT place this device in or near excessive heat or humidity.
- DO NOT yank any connected cables; disconnect them gently.
- If placing this device at heights or on a wall, make sure it's firmly secured to prevent damage possible injury.
- Router parts, such as antennas or the power supply, are dangerous should children put the small parts in their nose or mouth. KEEP THIS DEVICE OUT THE REACH OF CHILDREN!
- The router will become hot when used a long time. This is normal and is not a malfunction. Keep the router away from paper, cloth and other flammable materials.
- There's no user-serviceable part inside the router. If you find that the router is not working properly, contact your dealer (place of purchase) and ask for help. DO NOT disassemble the router. Doing so will void the warranty.
- If the router falls into water while turned on, DO NOT touch it to remove it! Turn off its power source before you do anything, or contact an experienced technician for help.
- If you smell something strange or see smoke coming out of the router or power supply, remove the power supply or turn the power off immediately, then call the dealer for help.

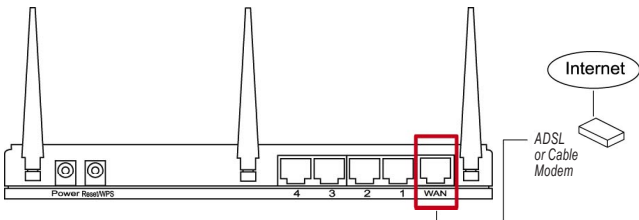
Package Contents

Before you start to install and operate use this router, make sure the following items are enclosed; otherwise, contact your dealer for assistance.

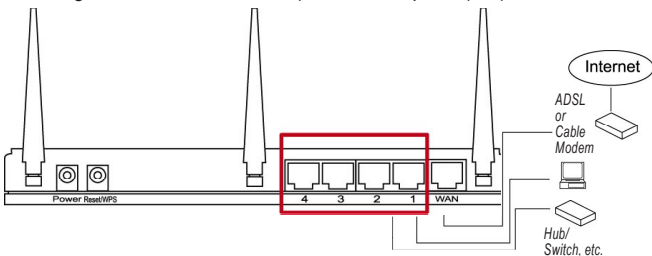
- Broadband router
- A/C power adapter
- Ethernet Cat5 RJ-45 cable: 1.0 m (3 ft.)
- Quick installation guide & user manual CDROM

Installation

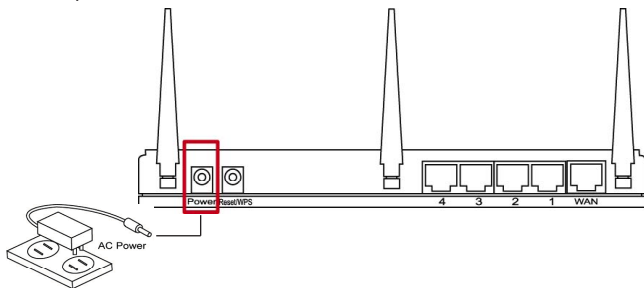
1. Connect your DSL or cable modem to the WAN port of the router using the provided RJ-45 Ethernet cable. **NOTE:** Standard modems provided by Internet service providers come with at least one LAN/Ethernet port, which connects to the WAN port of the INTELLINET NETWORK SOLUTIONS Wireless 802.11n Broadband Router.



2. Connect all your computers and network devices (network-enabled components like game consoles, network media players, network storage units or LAN switches) to the LAN ports (1-4) of the router.

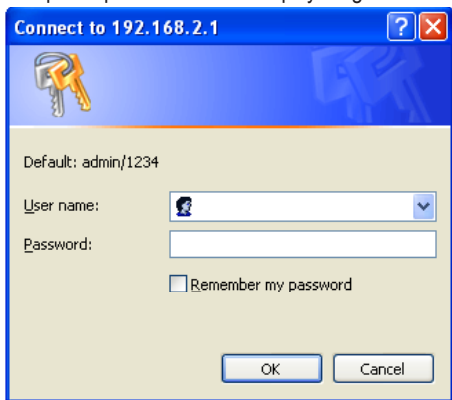


3. Connect the A/C power adapter to the wall socket, and then connect it to the power socket of the router.



4. Check all LEDs on the front panel. The PWR LED should be on, and the WAN and LAN LEDs should be on if the computer or network device connected to the corresponding router port(s) are powered on and correctly connected.
5. Connect your computer to one of the LAN ports of the router, then activate the network connection. Start the Web browser — e.g., MS Internet Explorer — and open <http://192.168.2.1> to display a login window.
6. Enter “admin” as the username and “1234” as the password.

Additional installation instructions — as well as explanations for all the setup options — can be found in the Wireless 802.11n Broadband Router user manual on the enclosed CD.



NOTES



INTELLINET™

NETWORK SOLUTIONS

BRINGING NETWORKS TO LIFE

INTELLINET NETWORK SOLUTIONS™ offers a complete line of active and passive networking products.

Ask your local computer dealer for more information or visit

www.intellinet-network.com

Copyright © INTELLINET NETWORK SOLUTIONS

All products mentioned are trademarks or registered trademarks of their respective owners.